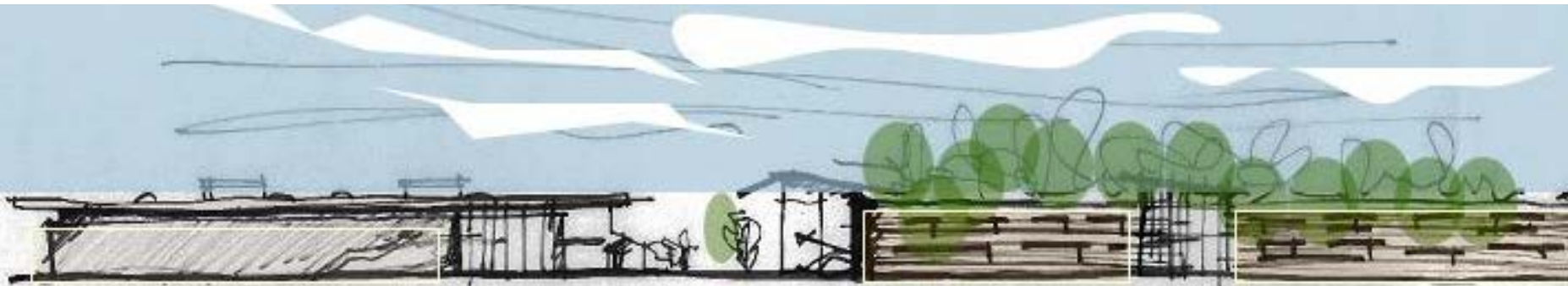


Conceptual Design Competition

For High School No. 5
Klein Independent School District



- site analysis
- campus planning
- building design



Design Approach

KISD has deep roots to the Klein rural community, our goal is to embrace the legacy of its founders and help define the dreams and aspiration of the community's future.

In a way KISD has started to pave the way for the future of the community with its commitment to transform and enhance the academic and physical environment of its schools through its 2008 Visioning Committee.

Our design seeks to respond to the new challenges and opportunities that the new diverse & growing population will present in the future of the Klein Community



Site Plan



- 1. BUS DROP-OFF
- 2. CENTRAL PLANT
- 3. CONSTRUCTED WETLANDS
- 4. CORE BUILDING
- 5. DETENTION
- 6. LEARNING COMMUNITIES
- 7. MAIN BUILDING / ADMINISTRATION
- 8. MIDDLE SCHOOL
- 9. PERVIOUS WALKWAYS
- 10. PUBLIC / TEACHER PARKING
- 11. SITE AMENITIES
- 12. STUDENT PARKING

Site Design Strategies

“design for this site, this climate and this region”

shade / solar orientation

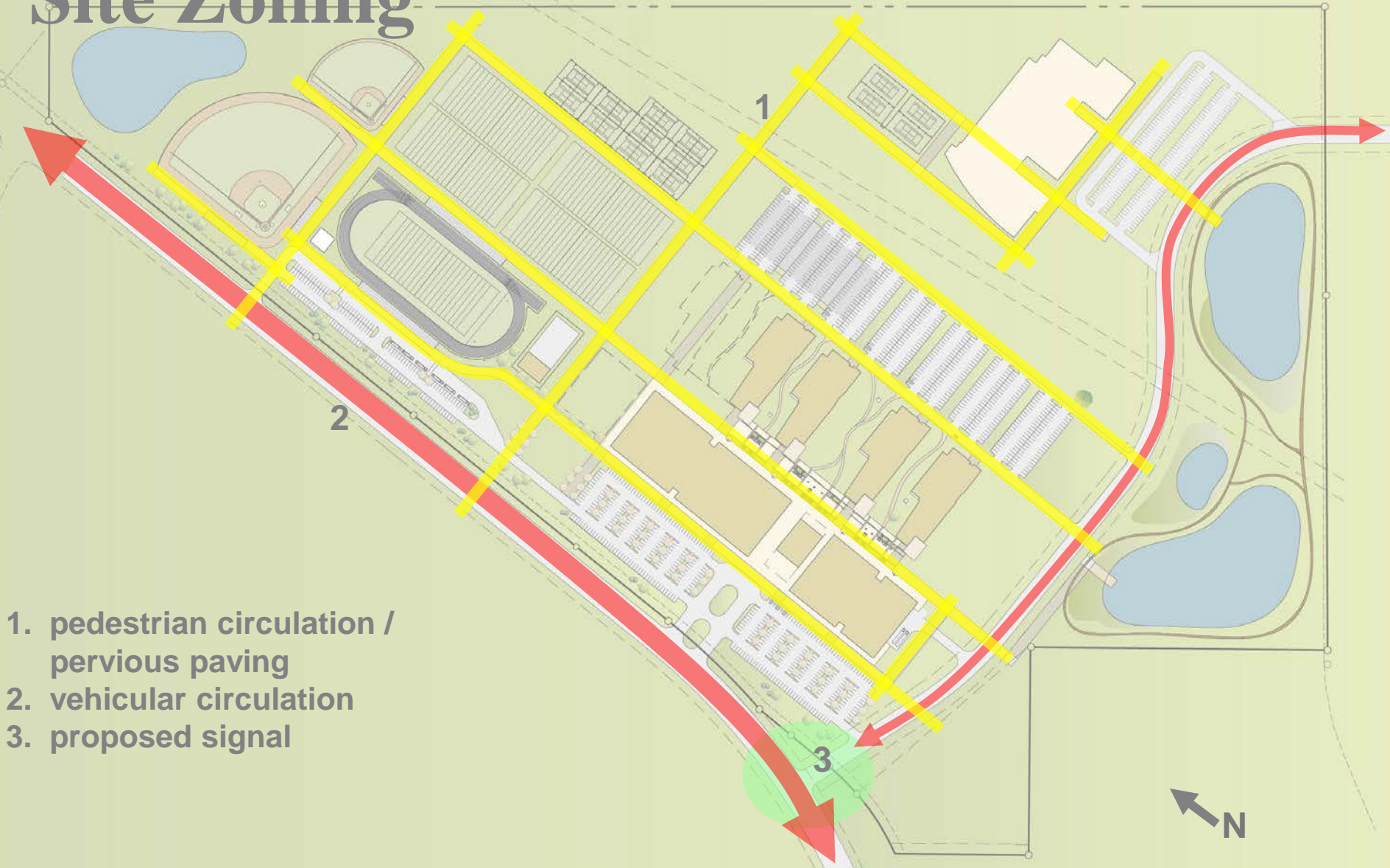
breeze

site amenities

local materials

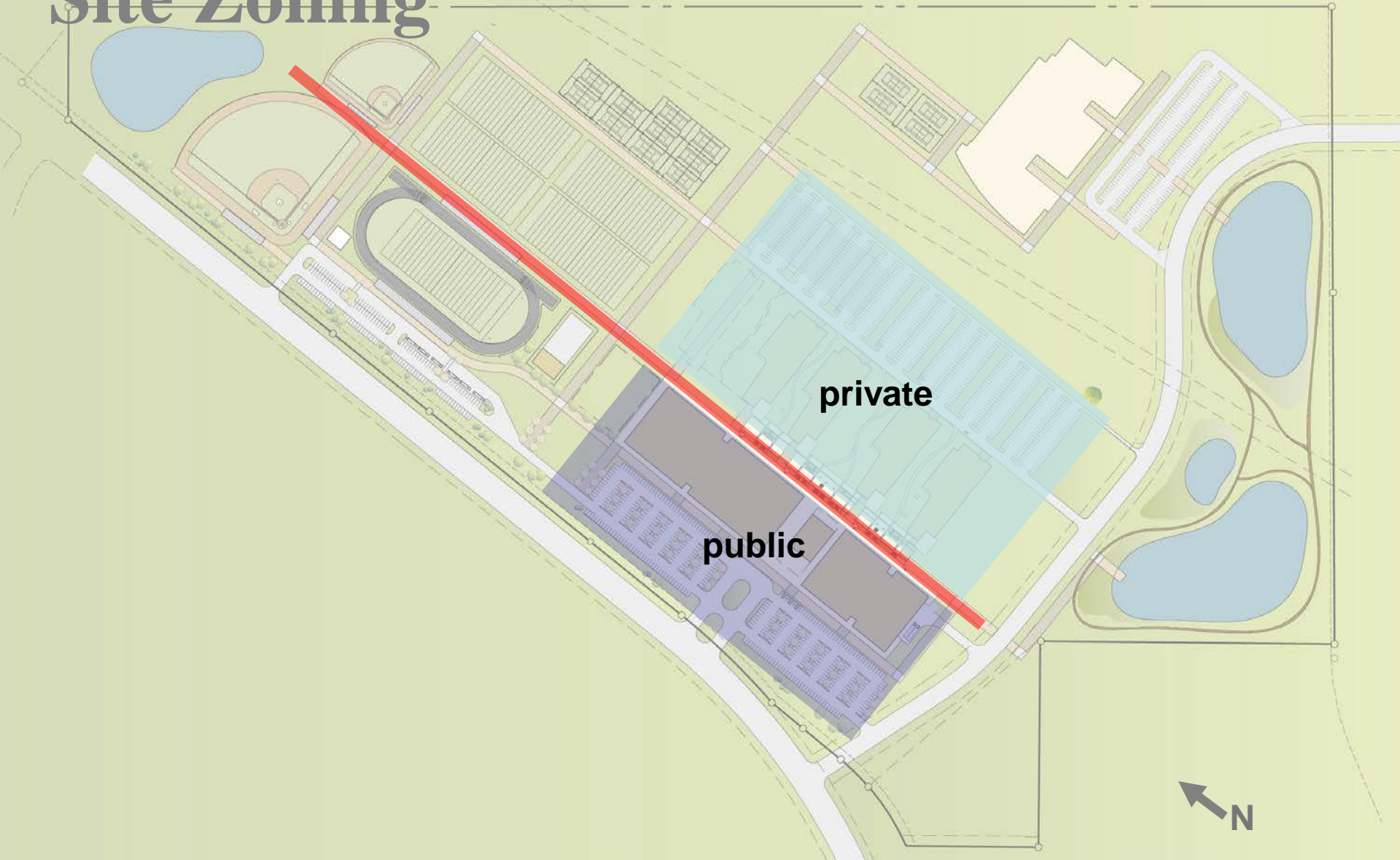


Site Zoning



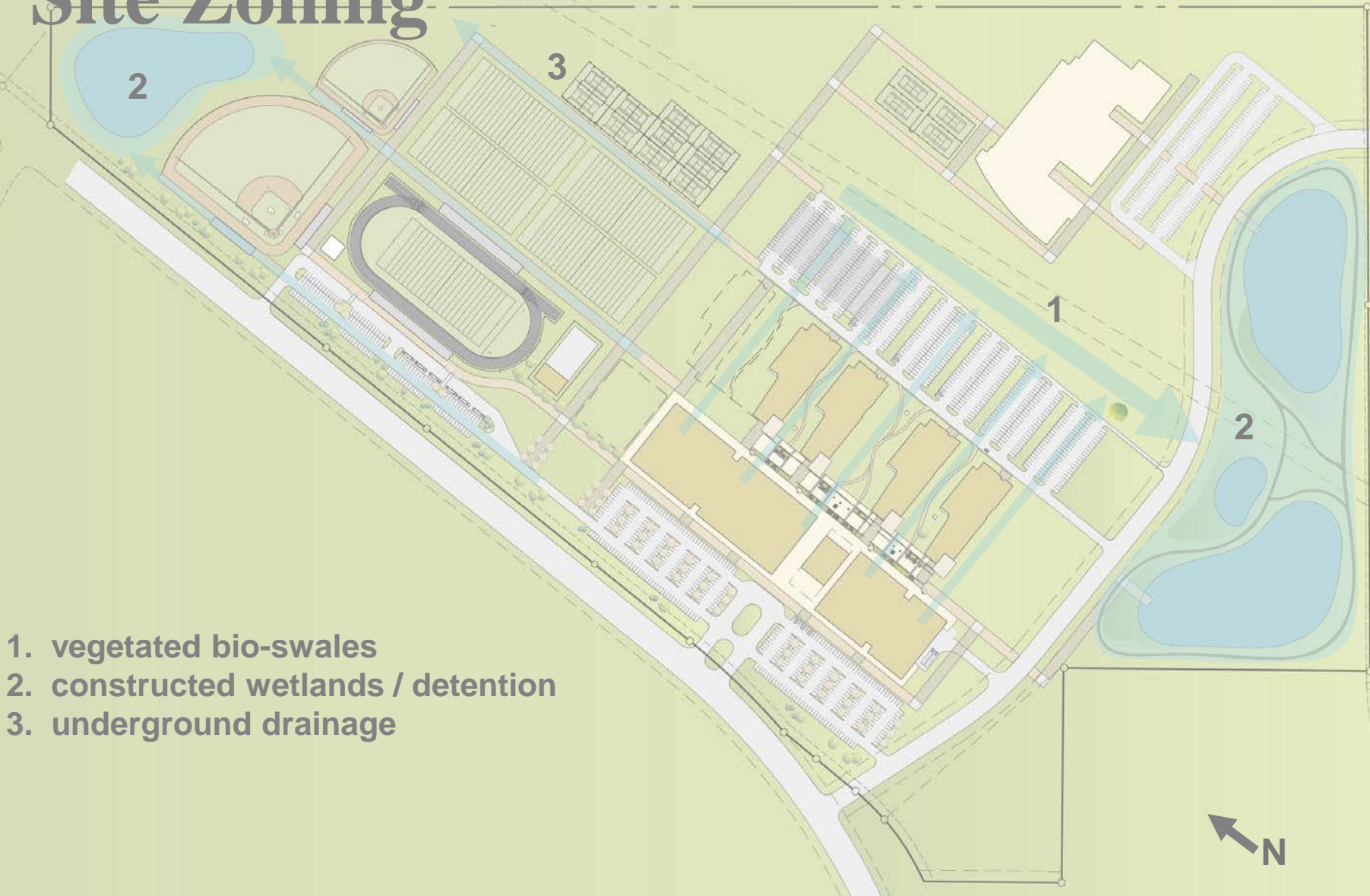
circulation diagram

Site Zoning



public / private

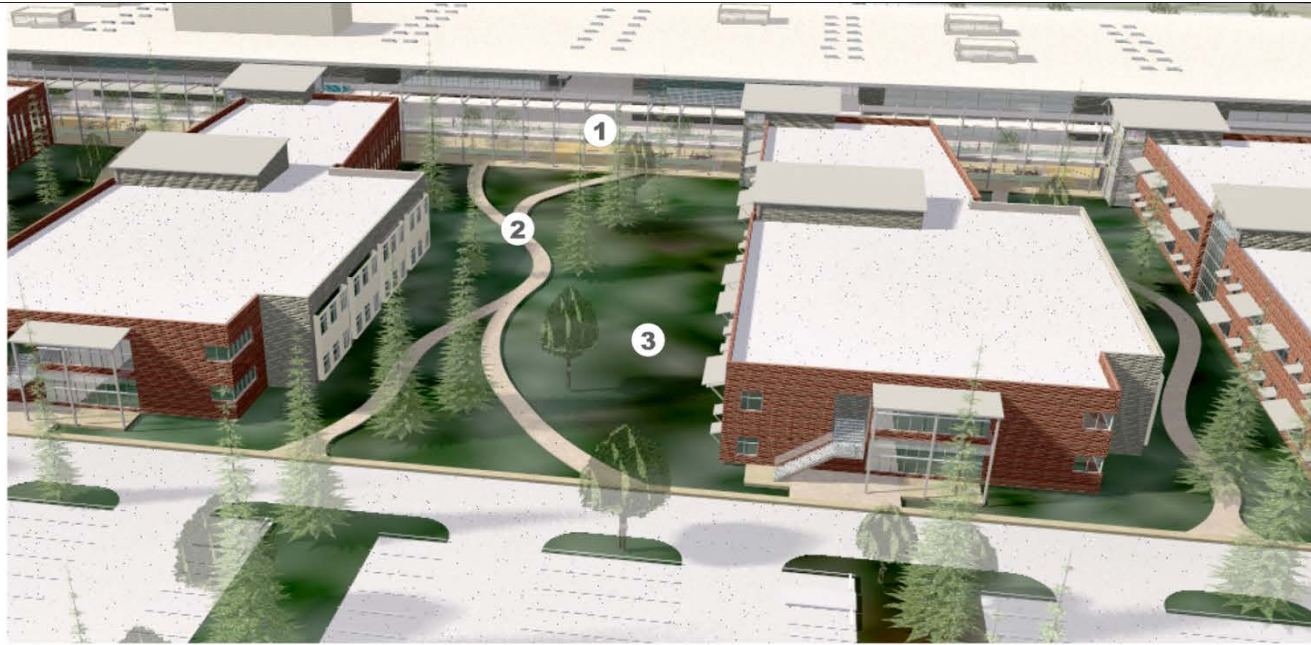
Site Zoning



- 1. vegetated bio-swales
- 2. constructed wetlands / detention
- 3. underground drainage

site drainage

Outdoor Learning

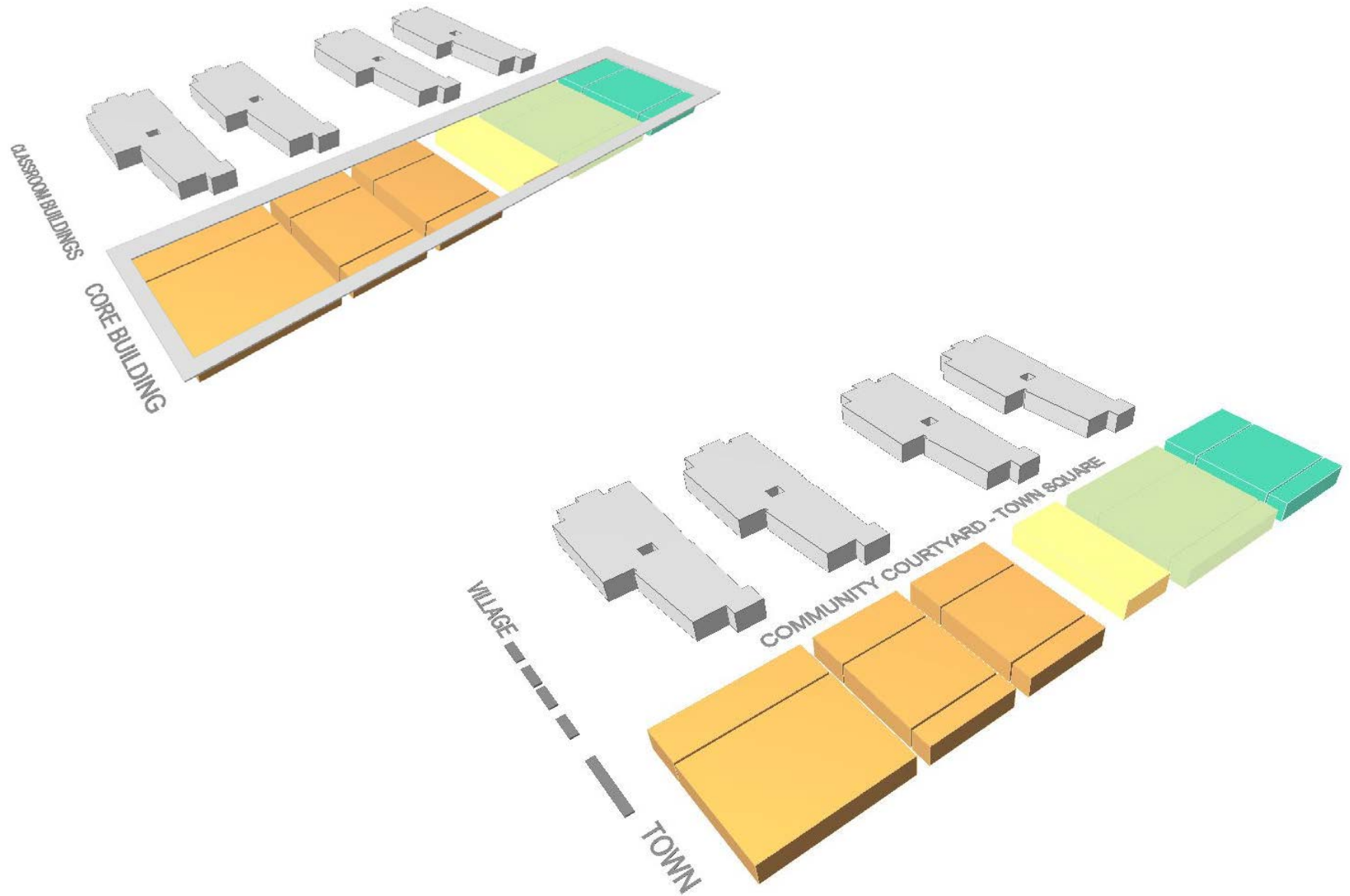


- 1. COVERED WALKWAYS / URBAN COURTYARD
- 2. PERVIOUS WALKWAYS
- 3. LEARNING COURTYARDS

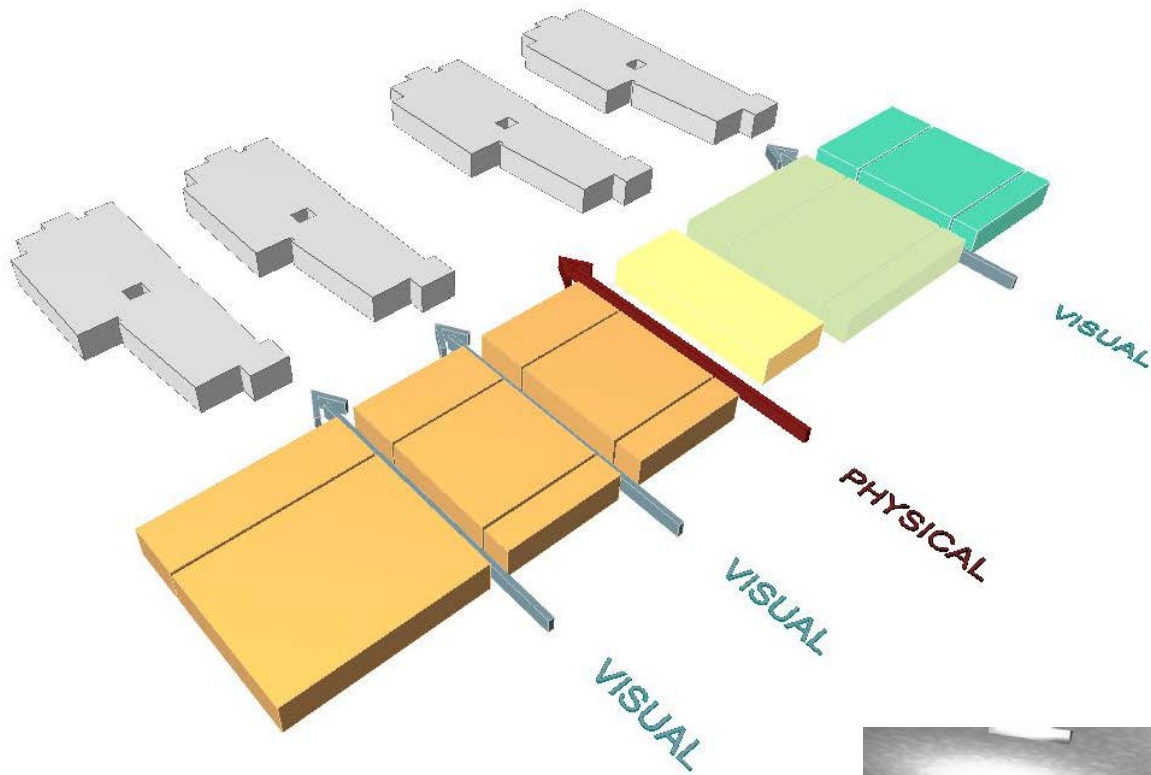


Formal “quiet” learning areas that once shushed students are morphing into centers of inquiry and collaboration. Heschong Mahone Group

Building Planning



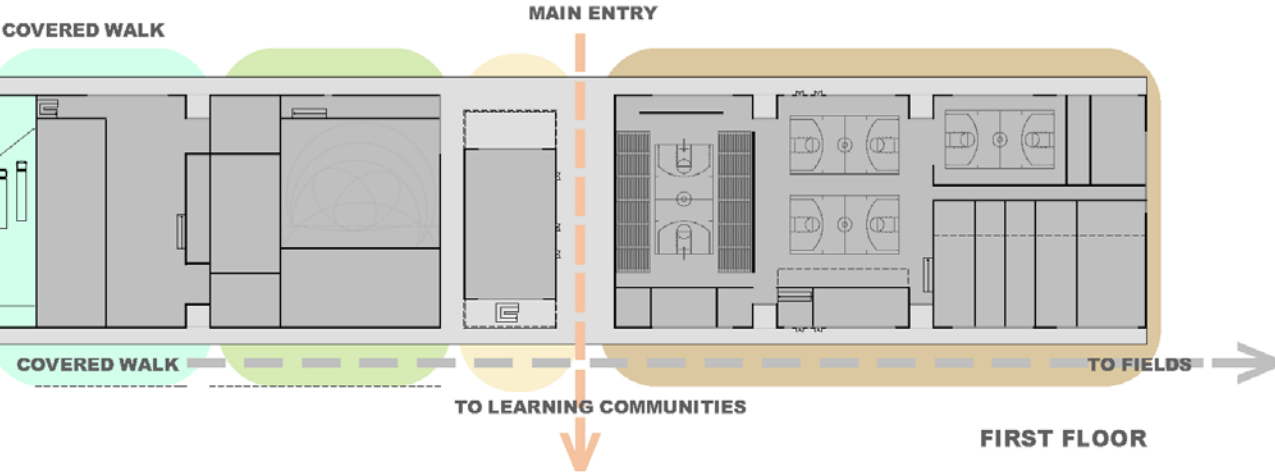
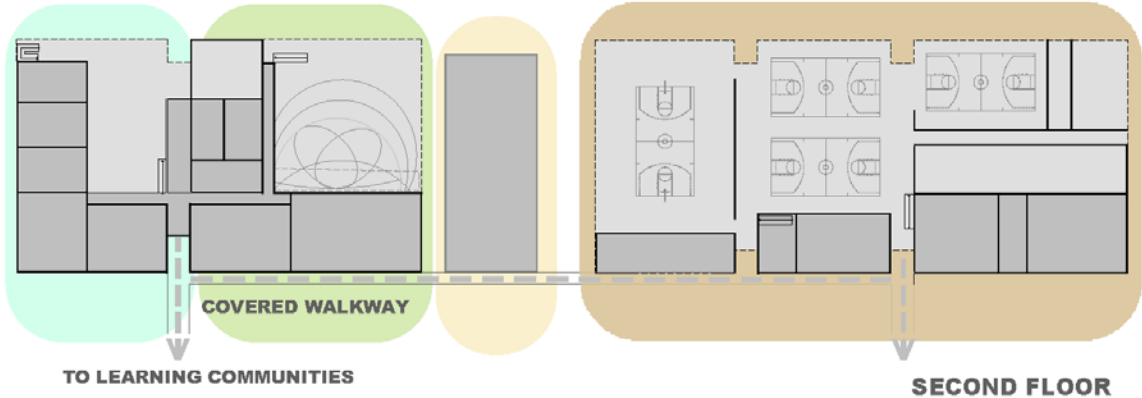
Building Planning



Building Planning

CORE BUILDING

The Core Building is the public face of the New Klein High School. Parallel to Spring-Cypress Road, it therefore has a North-western exposure. This building houses the large assembly spaces of the program, including, the Competition Gym & Athletic facilities, The Fine Arts Program, & Auditorium, The Child Nutrition Center, The Media Center and The Central Administration Offices. The main entrance to the school is adjacent to the Central Administration Suite with major drop off available @ the entry to the Competition Gym and @ the Child Nutrition Center. The Core building is planned as a series of buildings creating a town like effect. This is enhanced by glazed visual corridors that allow you to see through to the main courtyard and classroom buildings beyond. The internal organization of spaces puts the large assembly areas to the front of the building with the core classrooms on the first and second floors @ the rear of the building.



legend

- Athletics
- Administration
- Fine Arts & Auditorium
- Child Nutrition

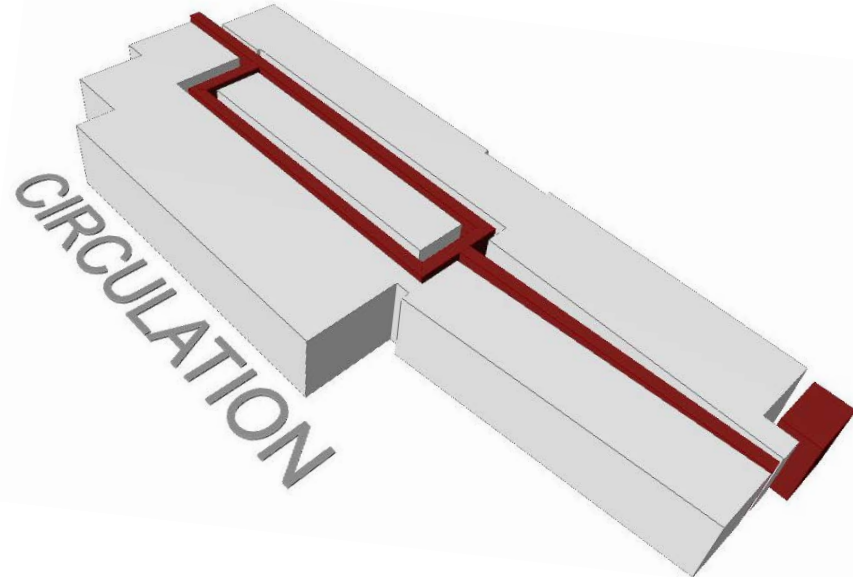
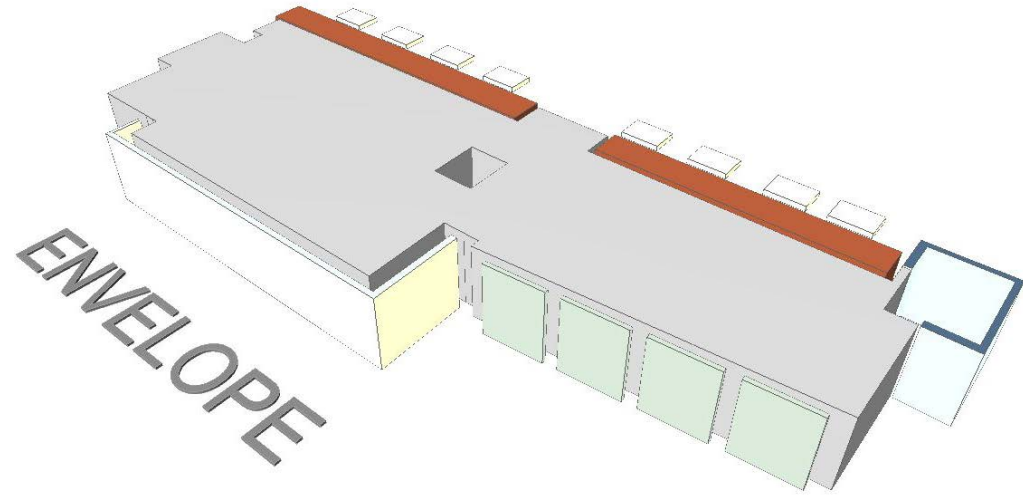
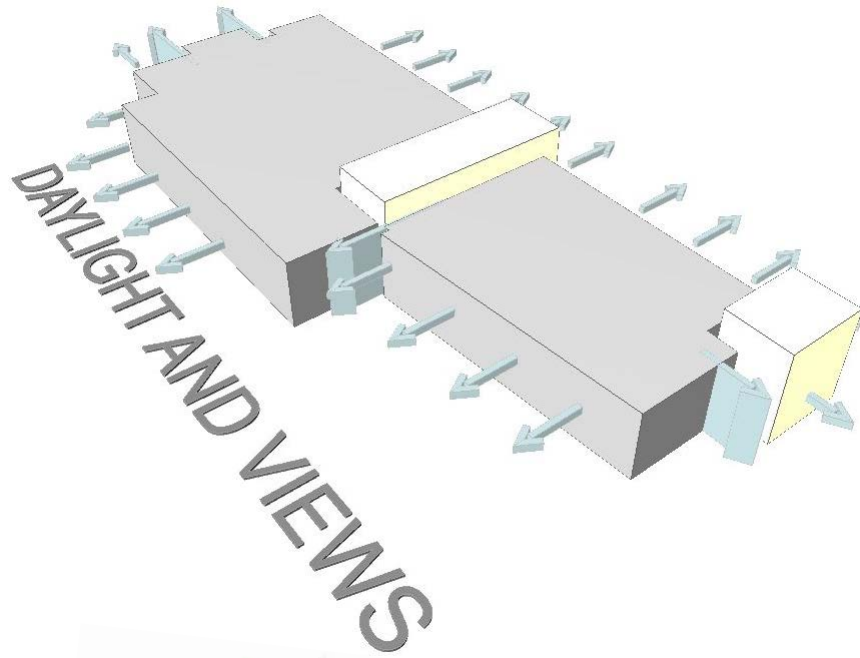
area calculations

Gross square foot Core Building-First Floor	175 000
Gross square foot Core Building-Second Floor	75 500
Gross square total Core Building-	250 500

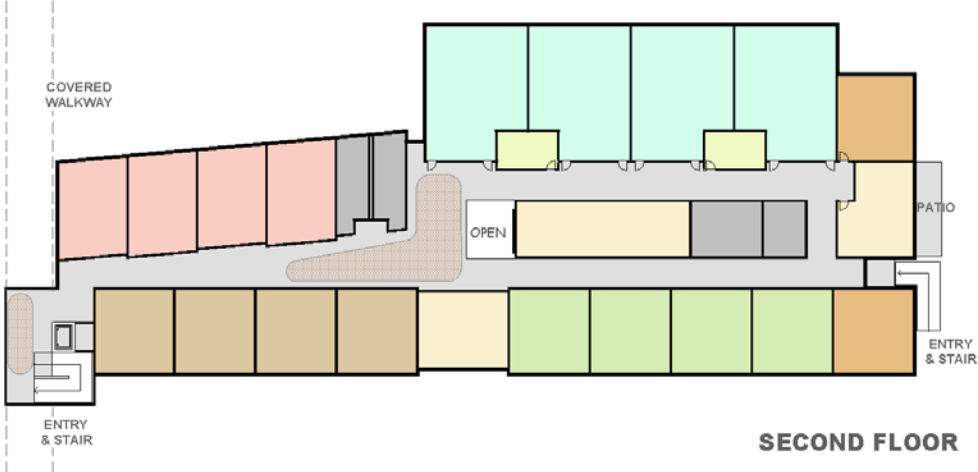


core building

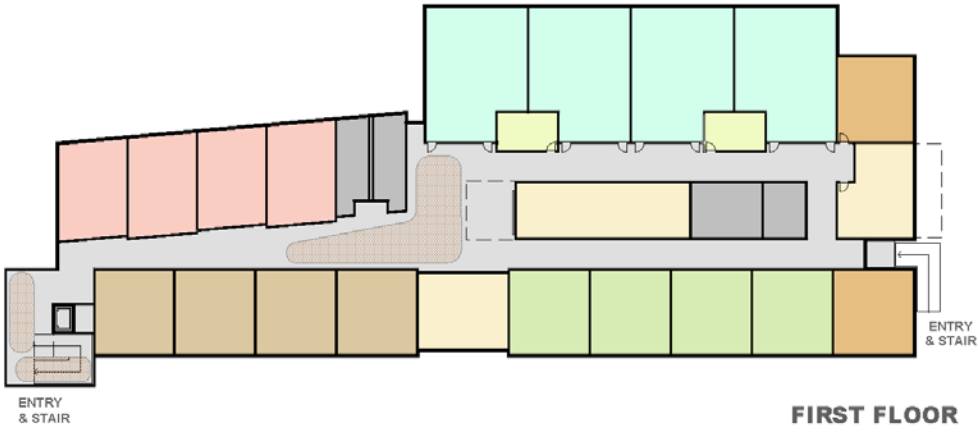
Building Planning



Building Planning



SECOND FLOOR



FIRST FLOOR

LEARNING COMMUNITIES

The Learning Communities for the New Klein High School have been divided into classroom buildings which are two stories each. There are six learning communities, and thus there are two communities in each classroom building one per floor. The site plan shows 4 classroom buildings with three building housing the Learning Communities and the Fourth Building housing the Elective Courses.

Planning for the learning communities places the classrooms and labs to the exterior walls allowing natural light into the teaching spaces. The two communities are connected by a communicating stair at the main entry and light well and double height space @ commons area. The classrooms are entered along a central spine which splits into two @ the administration and support areas. The end of the building is anchored by the teacher work room that looks out onto a patio, which is adjacent to the secondary entrance of the classroom building.

legend

- Student Flex Space
- Math Classrooms
- Social Studies Classrooms
- Science Labs
- Language Arts
- Foreign Languages
- Administration, Teacher Work Room
Teacher Prep Room, Language Arts Conference
- Support- Mechanical

area calculations

Gross square foot per community-	31 030
Gross square foot per Classroom Building-	62 060
Gross square total 4 classroom Buildings-	240 248



learning community

Interactive Courtyard

Kirksey
ARCHITECTURE



Community Courtyard

Kirksey
ARCHITECTURE



Core Building / Main Entry

Kirksey
ARCHITECTURE

